

# WAREHOUSE 2

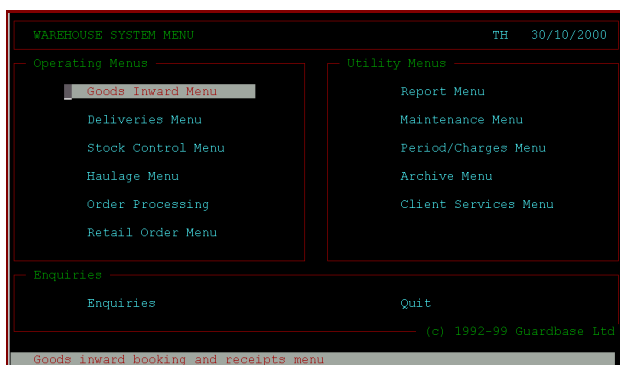
**Warehouse 2 is the ideal software solution to the ever demanding requirements of the Supply Chain.**

Warehouse 2 incorporates a comprehensive stock control system allowing traceability to unit level with interrogation via both screen and printed reports, handling and rent charging and haulage management.

Other features include remote connection by your customers for stock enquiries, optional client sales invoicing and EDI links.

The software is flexible and allows amendments and enhancements to suit particular requirements. It is optimised for character-based on Unix operating systems with some programs running client server under Windows 95 and above. Single user systems may be run character-based on Windows.

Warehouse 2 has been developed over many years in conjunction with several public warehouse keepers and continues to develop as customers' requirements change and technology improves. Customers are informed of relevant enhancements and are given the opportunity of enjoying these upgrades.



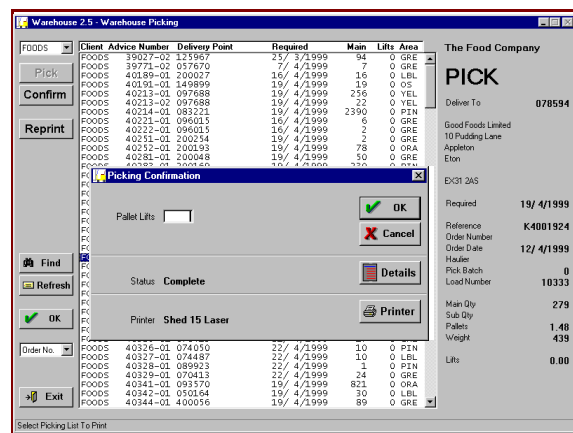
Guardbase also provides on-site training, telephone and remote support and site visits when required.

## GENERAL FEATURES

- User security with multiple access levels
- Multi-site operation
- Comprehensive reporting
- Optional client invoicing

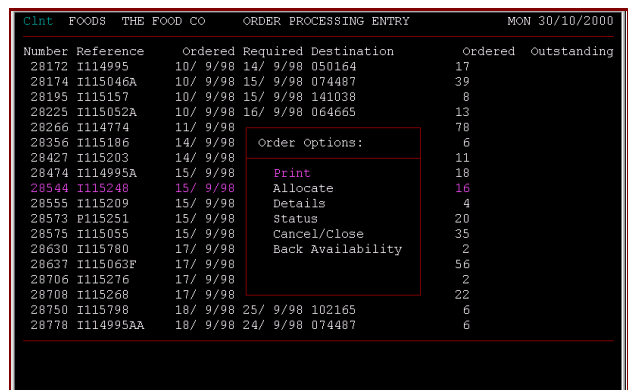
## GOODS RECEIPT

- Receipts by rotation to ensure FIFO and traceability
- Capture of expiry dates
- Entry by product group initiates rent charges
- Locations validated to site and bay
- Stock condition clausung
- Flags for quarantine



## ORDER PROCESSING

- Orders can be entered locally or by clients remotely
- Each order uniquely identified
- Entry of client references and comments
- Stock allocated by rotation or earliest ship by date to ensure FIFO
- Bulk picking list if required
- Picking notes by either product or location
- Clean consignment note to accompany goods
- Delivery confirmation on receipt of POD

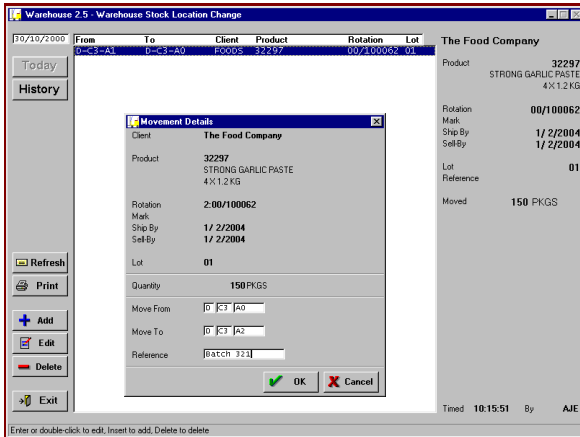


G  
U  
A  
R  
D  
B  
A  
S  
E  
  
L  
T  
D

## STOCK CONTROL

Stock level adjustments with annotation  
Stock location movements  
Stock transfer between rotations and/or clients  
Stock can be frozen from allocation

A large range of stock reports, including:-  
Stock quantities at product and/or rotation level  
Stock list in location order  
Product movements between any two dates  
List of all frozen stock  
List of stock at or past sell-by date



## STOCK-TAKE FACILITIES

By client for one or more products  
By client for one or more locations  
By location for one or more clients

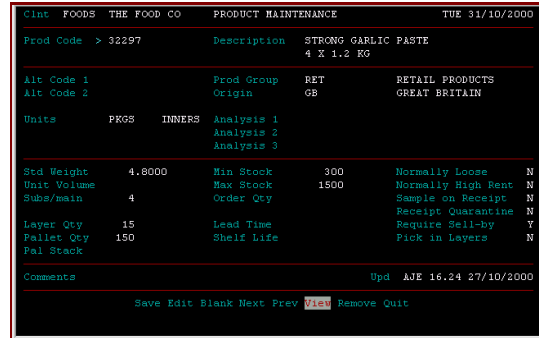


## SYSTEM MAINTENANCE

Company details and VAT rates  
User details with access levels and passwords  
Site and location details  
Customer and haulier details

## INVOICING

Charges set by group of products  
Separate charges set for loose or palletised receipts  
Charges itemised by rotation  
Up to 12 weeks rent free may be set  
Stock level status and movements shown  
Entry for sundry charges  
Summary of charges and VAT analysis



## ADDITIONAL FACILITIES

### TRANSPORT

Costing and charging of haulage  
Assignment of orders to haulage load

### REMOTE ACCESS AND EDI

Control of accessible information  
On-line enquiries  
Client entry of delivery orders  
Remote enquiries of stock status and movements

### CLIENT SERVICES

Sales invoicing on behalf of clients  
Client sales reports by product by customer  
Stock turnover  
Stock management reports

### ACCOUNTING LINKS

Export of invoice data into Sage Line 100

### RETAIL ORDERS

Bulk picking of volume small orders  
Single stock transaction per batch  
Links to carrier systems

### CUSTOMISATION

Bespoke reports  
Customer-specific programs

Warehouse 2 is produced by Guardbase Ltd, a specialist in the development of stock control systems.

Guardbase Ltd also has expertise in data networks and inter-branch communications.

Guardbase Ltd can supply the hardware you need to run Warehouse 2 and to communicate with systems at other sites or branches, including those of your customers.

FAR COCKCROFT RISHWORTH SOWERBY BRIDGE W YORKSHIRE HX6 4RE  
TEL: 01422 822990 FAX: 01422 824885  
EMAIL: INFO@GUARDBASE.CO.UK WWW.GUARDBASE.NET

All trademarks acknowledged. © Copyright Guardbase Ltd 2000-3

G  
U  
A  
R  
D  
B  
A  
S  
E  
  
L  
T  
D